



Government of West Bengal
Office of the District Land & Land Reforms Officer
Murshidabad

Memo. No: 429/X-34/C/17

Dated, Berhampore, the 4th January, 2016

Notice inviting e-Auction for grant of Mining Lease of Sand

Notices are hereby invited for e-Auction from bona fide individuals, firms and companies for grant of mining lease of sand (minor minerals) only through online mode of bidding in the Government e-Auction System (<http://eauction.gov.in>) for 13 (Thirteen) Nos. of Sand Blocks situated in District- Murshidabad and Block- Burwan, Bharatpur-I, Kandi in the riverbed of Mayurakshi river as per provisions of the West Bengal Minor Minerals (Concession) Rules, 2016 and West Bengal Minor Minerals (Auction) Rules, 2016, whose land schedules and maps are annexed with this notice. The terms and conditions are given in the Bid document annexed with this notice and also in the Government e-Auction System Portal. It is also available at the offices of the:

- 1) District Magistrate & Collector, Murshidabad.
- 2) District Land & Land Reforms Office, Murshidabad.
- 3) Sub-Divisional Land & Land Reforms Office (all), Murshidabad.
- 4) Block Land & Land Reforms Office (all), Murshidabad

Intending bidders must have Digital Signature Certificate for e-submission of their bids online through e- Procurement Portal & to participate in the competitive bidding online. Relevant papers / documents (listed below) should be submitted in any working day between 11 a.m. to 5 p.m. on and from 05.01.17 to 11.01.17 at the sealed tender box kept in the Office of the Additional District Magistrate (LR) & District Land & Land Reforms Officer, Murshidabad.

- a) Self attested photocopy of PAN Card.
- b) Self attested photocopy of Voter Identity Card (For individual).
- c) Self attested photocopy of the partnership deed / trade license / firm registration documents / documents in support of identity of the proprietors (For firm).
- d) Self attested photocopy of Income Tax Return for the last 03 (three) years.
- e) Self attested Income Tax Clearance Certificate from Income Tax Officer.
- f) Self attested documents relating to financial qualification (solvency) of the bidder.

Earnest Money to be deposited in the manner as provided in the Bid Document.

The schedule of sand blocks along with maps as provided may be examined by the intending bidders and they may physically inspect the fields in order to get acquainted with the present situation. The intending bidders may seek necessary assistance from the concerned B.L & L.R.Os for inspection of the sand bearing blocks.

Sd/-
District Magistrate
Murshidabad

Additional sheet for 2nd Re-e-Auction :-

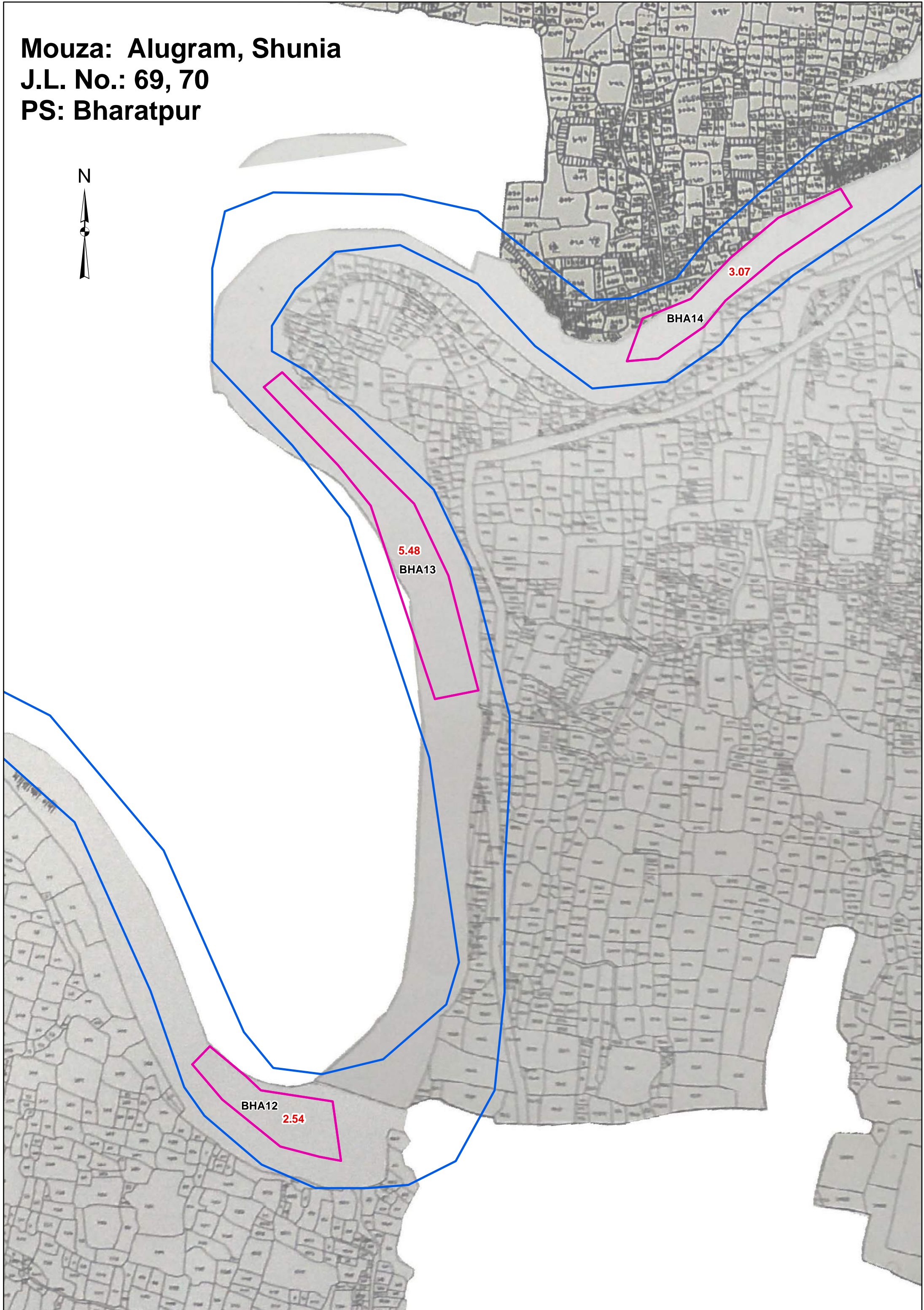
Sl no.	District	PS	Mouza	JL No.	River	Code	Previous Auction-ID	Plot no	Area (in Ha)	Latitude	Longitude	Mineable Reserve	Reserve Price in Rs.	Earnest money in Rs.	Solvency Amount
1	2	3	4	5	6	7	8	9	10	11	12	13	14	15	16
1	Murshidabad	Bharatpur	Shunia	70	Mayurakshi	BHA13	2016_DMMWB_19	1 (P)	2.2	23°55'2.3"N	88°5'38.7"E	52800	275000	27500	110000
2	Murshidabad	Bharatpur	Madanpur Dafarpur	73	Mayurakshi	BHA14	2016_DMMWB_20	1 (1)	1.2	23°55'12.3"N	88°5'53.9"E	28800	150000	15000	60000
3	Murshidabad	Bharatpur	Madanpur Dafarpur	73	Mayurakshi	BHA15	2016_DMMWB_21	11 (P)	1.8	23°55'41.4"N	88°6'26.2"E	43200	225000	22500	90000
4	Murshidabad	Kandi	Hijal	41	Mayurakshi	KAN02	2016_DMMWB_23	6167 (P)	1.7	23°57'45.0"N	88°7'35.1"E	40800	212000	21200	84800
5	Murshidabad	Burwan	Mandra	103	Mayurakshi	MANDRA02	2016_DMMWB_30	699	2.86	23°52'50.82"N	87°53'12.35"E	65118	339000	33900	135600
6	Murshidabad	Burwan	Kogram	109	Mayurakshi	KGRM 1	2016_DMMWB_45	1/2290 (p), 1/2440, 2 (p)	4	23°52'30.47"N 23°52'27.65"N 23°52'25.06"N	87°53'53.44"E 87°53'52.63"E 87°53'53.75"E	91074.37	473000	47300	189200
7	Murshidabad	Burwan	Kogram	109	Mayurakshi	KGRM 3	2016_DMMWB_47	1/2290 (p), 1/2291 (p), 2 (p)	4	23°52'31.03"N 23°52'28.28"N 23°52'25.89"N	87°54'2.03"E 87°54'2.20"E 87°54'1.90"E	91074.37	473000	47300	189200
8	Murshidabad	Burwan	Kogram	109	Mayurakshi	KGRM 5	2016_DMMWB_49	1/2441 (p), 1/2290 (p), 1/2291 (p), 2 (p)	3.94	23°52'38.85"N 23°52'35.50"N 23°52'31.88"N 23°52'29.04"N	87°54'10.96"E 87°54'9.94"E 87°54'9.67"E 87°54'9.43"E	89708.24	466000	46600	186400
9	Murshidabad	Burwan	Shenai	102	Mayurakshi	SNAI 3	2016_DMMWB_54	1569 (p), 1571 (p)	0.6	23°52'48.19"N 23°52'45.39"N 23°52'44.08"N	87°53'35.89"E 87°53'37.15"E 87°53'35.63"E	14400.5	75000	7500	30000
10	Murshidabad	Burwan	Rajyadharpur	135	Mayurakshi	RAJYADHAR PUR 02	2016_DMMWB_56	59(P), 60(P)	3.6	23°53'1.60"N	87°55'2.94"E	86400	449000	44900	179600
11	Murshidabad	Burwan	Rajyadharpur	135	Mayurakshi	RAJYADHAR PUR 03	2016_DMMWB_57	59(P), 60(P)	3.6	23°53'7.59"N	87°55'9.71"E	86400	449000	44900	179600
12	Murshidabad	Burwan	Rajyadharpur	135	Mayurakshi	RAJYADHAR PUR 04	2016_DMMWB_58	59(P), 60(P)	3.6	23°53'5.02"N	87°55'14.55"E	86400	449000	44900	179600
13	Murshidabad	Burwan	Bhastore	99	Mayurakshi	BHSR 2	2016_DMMWB_65	RS 294 (P)	4.30	23°52'29.75"N	87°52'7.53"E	97905	509000	50900	203600
									37.4						

Sd/-

Additional District Magistrate (LR) and
District Land & Land Reforms Officer

Murshidabad

Mouza: Alugram, Shunia
J.L. No.: 69, 70
PS: Bharatpur



Mouza: Alugram, Shunia
J.L. No.: 69, 70
PS: Bharatpur



BHA14

3.07

5.48
BHA13

BHA12
2.54

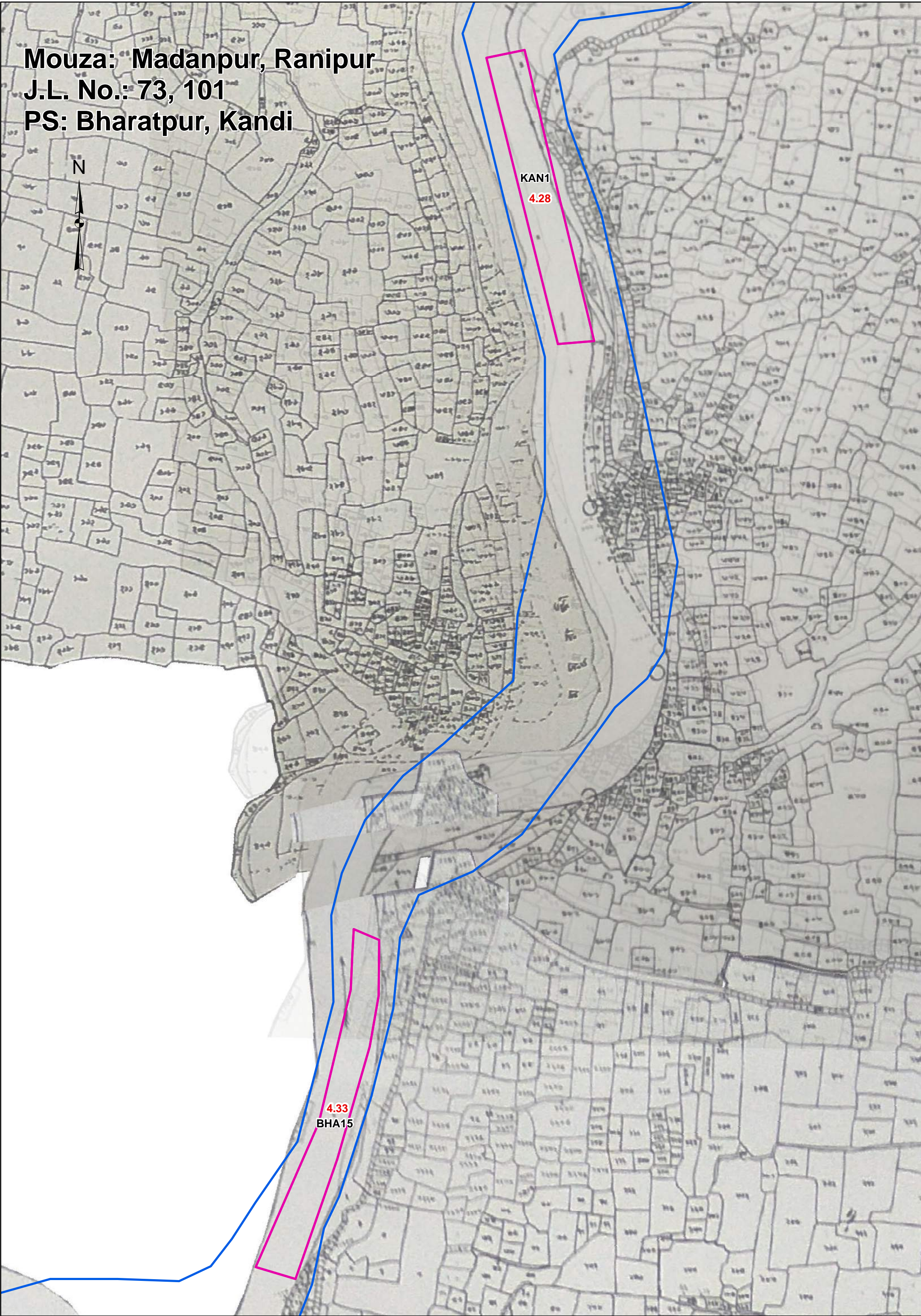
Maiti Pukur

Mouza: Madanpur, Ranipur
J.L. No.: 73, 101
PS: Bharatpur, Kandi



KAN1
4.28

4.33
BHA15



Mouza: Madanpur, Ranipur
J.L. No.: 73, 101
PS: Bharatpur, Kandi



KAN1
4.28

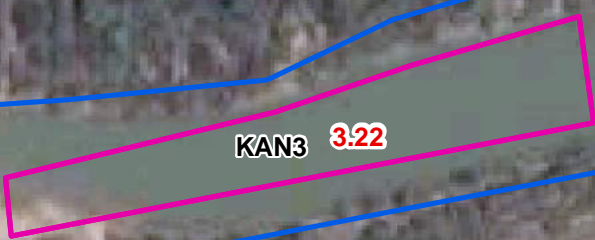
4.33
BHA15



Mouza: Hijal
J.L. No.: 12
PS: Kandi



Mouza: Hijal
J.L. No.: 12
PS: Kandi



Bhagulia

Talbona

Jhilera

Legend

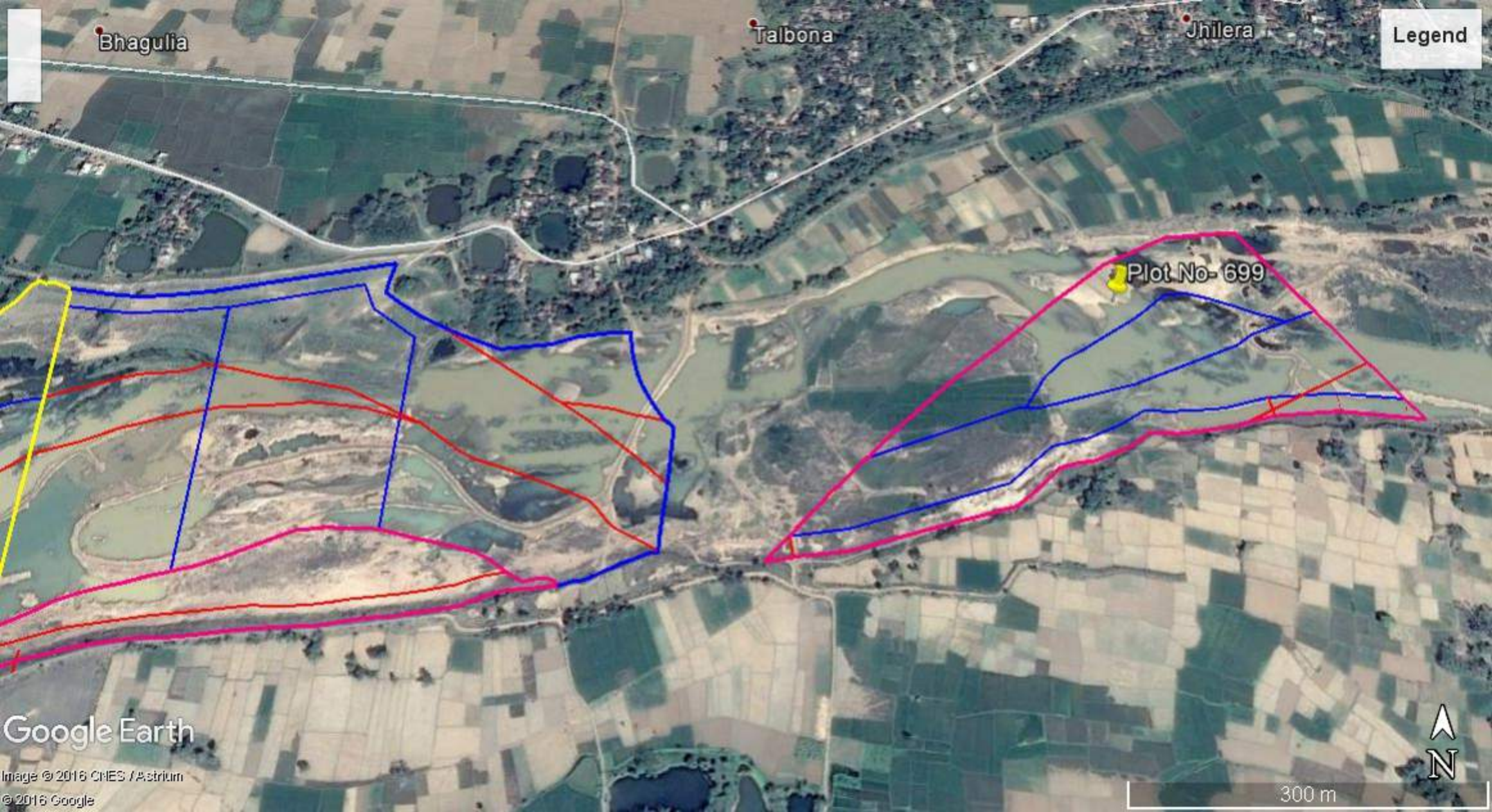
Plot No- 699

Google Earth

Image © 2016 CNES / Astrium

© 2016 Google

300 m



Plot No-1569(P)

Legend

KOGRAM_MURSHIDABAD_01

Plot No-2290 (P)

Plot No-2440

Plot No-2(P)

Siuli

Margram

Kogram

Google Earth

Image © 2016 CHES / Astrium
© 2016 Google



500 m

Petari

Legend

Namu Petari

KOGRAM_MURSHIDABAD_03

Siu

Plot No-2290(P)

Margram

Plot No-2291(P)

Plot No-2(P)

Kogram

Google Earth

© 2018 Google
Image © 2018 CHES / Astrium



Petari

Legend

Namu Petari

KOGRAM_MURSHIDABAD_05

Plot No-2441 (P)

Plot No-2290 (P)

Plot No-2291 (P)

Plot No-2 (P)

Margram

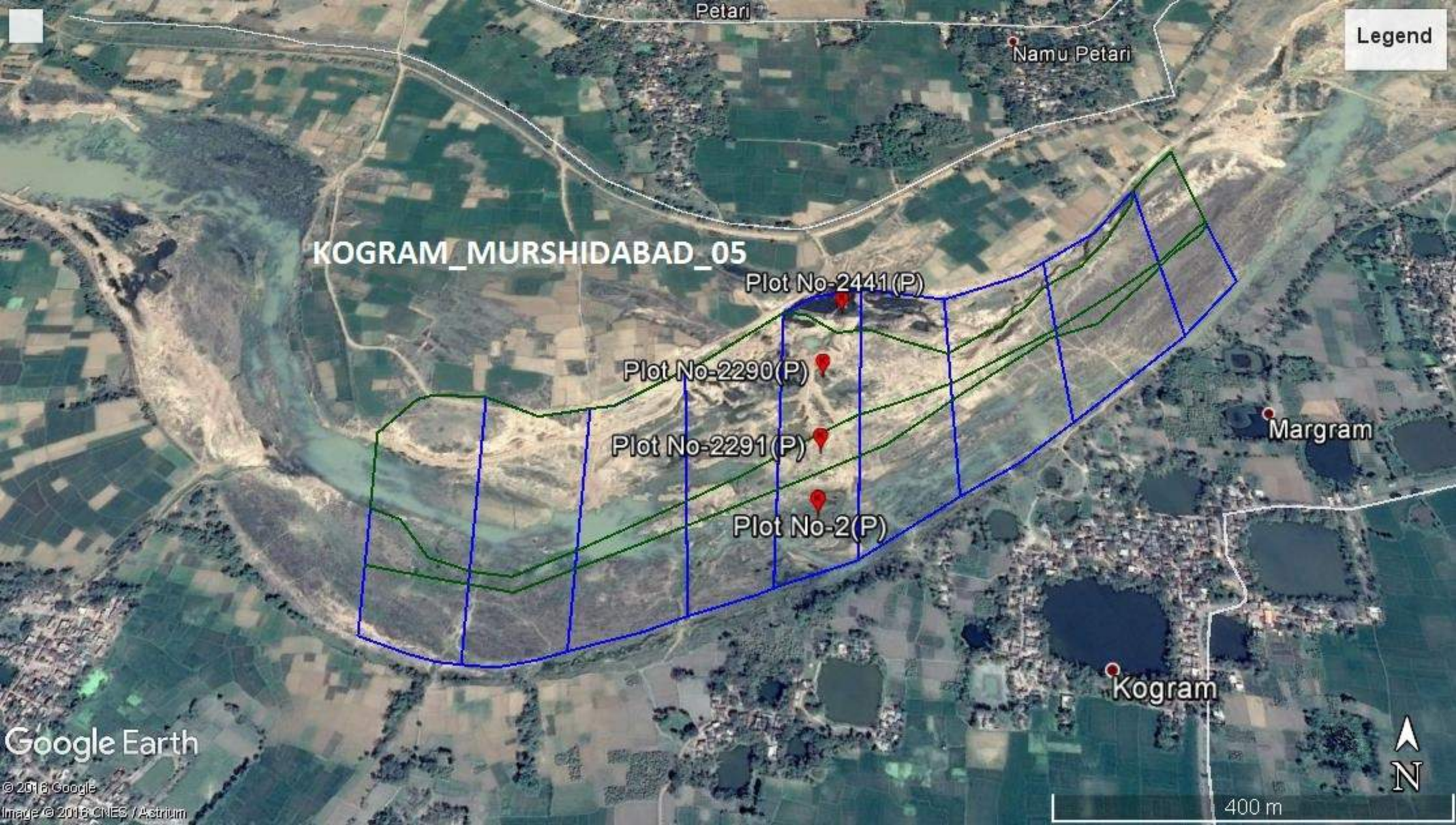
Kogram

Google Earth

© 2018 Google
Image © 2018 CNES / Astrium



400 m





Legend

Tarabona

Jhilera

Senai

Pet

SENAI_MURSHIDABAD_03

Plot No-1569(P)

Plot No-1570(P)

Plot No-1571(P)

Google Earth

© 2016 Google
Image © 2016 CNES / Astrium



400 m

Legend



Narayanpara

Kakra

Saheb Nagar

Rajyadharpur_02

Plot No - 60(P)

Rajyadharpur

Google Earth

Image © 2016 CNES / Astrium
© 2016 Google

500 m



Legend



Kakra

Saheb nagar

Narayanpara

Rajyadharpur_03

Plot No - 59(P)

Plot No - 60(P)

Rajyadharpur

Google Earth

Image © 2016 CNES / Astrium
© 2016 Google

500 m



Legend



Kakra

Saheb nagar

Narayanpara

Rajyadharpur_04

Plot No - 59(P)

Plot No - 60(P)

Rajyadharpur

Google Earth

Image © 2016 CNES / Astrium
© 2016 Google

500 m



Legend



Panuti

Ramnagar

Plot no- RS 294(P)

Dewar

Google Earth

© 2016 Google
Image © 2016 CNES / Astrium

300 m



Form- A (MANDRA-02)

[See sub-rule (1) of rule 9 of West Bengal Minor Minerals 9 (Auction) Rules, 2016]

MINING LEASE AREA (IN HA)	2.86 ha			
LOCATION OF MINE (CENTRE WITH CO-ORDINATE): LOCATION MOUZA, BLOCK, P.S. AND GIS COORDINATE (LATITUDE & LONGITUDE) OF THE CENTRAL AXIS OF THE MINING AREA.	State:	West Bengal		
	District:	Murshidabad		
	PS:	Burwan		
	Block	Burwan		
	Mouza & JL no	Mandra, 103		
	Plot no	699		
		Latitude	Longitude	
	Central Axis	23°52'50.82"N	87°53'12.35"E	
RIVER/ CANAL/ KHAL	Mayurakshi River			
TOPOGRAPHY	The district is nearly flat with a gentle slope from West to East			
MINERALS OF THE MINE	Sand			
LIFE OF THE MINE	5 years			
PROPOSED PRODUCTION OF MINE	65118 cum/annum			
METHOD OF MINING	Manual			
DRILLING AND BLASTING	Not required			
WATER DEMAND	1.5 KLD			
SOURCE OF WATER	From Nearby village			
ULTIMATE DEPTH OF THE MINING	3m			
AVERAGE MAN POWER/DAY	19			
SOLID WASTE INCLUDING RESIDUAL RIVER BED MATERIALS	2.5 kg / day domestic waste			
NEAREST RAILWAY STATION	Murshidabad Railway Station, 34km, NE			
NEAREST STATE HIGHWAY/ NATIONAL HIGHWAY	SH7, 10km, SE			
NEAREST AIRPORT	Netaji Subhash Chandra Bose International Airport, 139km, SSE			
NEAREST RESERVE FOREST/ PROTECTED FOREST/ FOREST	No notified forest area is present within 5km of the project site.			

Sd/-

**District Magistrate & Collector
Murshidabad**

Form- A (BHASTOR-02)

[see sub-rule (1) of rule 9 of West Bengal Minor minerals 9 (Auction) Rules, 2016]

MINING LEASE AREA (IN HA)	4.30		
LOCATION OF MINE (CENTRE WITH COORDINATE): LOCATION MOUZA, BLOCK, P.S. AND GIS COORDINATES (LATITUDE & LONGITUDE) OF THE CENTRAL AXIS OF THE MINING AREA	State	West Bengal	
	District	Murshidabad	
	PS	Burwan	
	Mouza	Bhastor	
	JL No	99	
	Plot No	RS 294(P)	
		Latitude	Longitude
	Central Axis	23°52'29.75"N	87°52'7.53"E
RIVER/CANAL/KHAL	Mayurakshi River		
TOPOGRAPHY	The district is nearly flat with a gentle slope from West to East		
MINERALS OF THE MINE	Sand		
LIFE OF THE MINE	5 years		
PROPOSED PRODUCTION OF MINE	Minable Reserve	97905 m ³	
METHOD OF MINING	Manual		
DRILLING AND BLASTING	Not required		
WATER DEMAND	1.5 KLD		
SOURCE OF WATER	From nearby village		
ULTIMATE DEPTH OF THE MINING	3 m		
AVERAGE MAN POWER /DAY	19		
SOLID WASTE INCLUDING RESIDUAL RIVER BED MATERIALS	2.5 kg/day domestic waste		
NEAREST RAILWAY STATION	Labpur Railway Station is about 9.41 km in South-West-South		
NEAREST STATE HIGHWAY	Sundarpur Road SH11, 7.35 km. in East		
NEAREST AIRPORT	Netaji Subhash Chandra Bose International Airport, 147.8 km towards South-East		
NEAREST RESERVE FOREST/ PROTECTED FOREST/ FOREST	No (within 10 km radius)		

Sd/-
District Magistrate & Collector
Murshidabad

Form- A (RAJYADHARPUR-02)

[see sub-rule (1) of rule 9 of West Bengal Minor minerals 9 (Auction) Rules, 2016]

MINING LEASE AREA (IN HA)	3.6	
LOCATION OF MINE (CENTRE WITH COORDINATE): LOCATION MOUZA, BLOCK, P.S. AND GIS COORDINATES (LATITUDE & LONGITUDE) OF THE CENTRAL AXIS OF THE MINING AREA	State	West Bengal
	District	Murshidabad
	PS	Burwan
	Mouza	Rajyadharpur
	JL No	135
	Plot No	59(P), 60(P)
		Latitude
Central Axis	23°53'1.60"N	87°55'2.94"E
RIVER/CANAL/KHAL	Mayurakshi River	
TOPOGRAPHY	The district is nearly flat with a gentle slope from West to East	
MINERALS OF THE MINE	Sand	
LIFE OF THE MINE	5 years	
PROPOSED PRODUCTION OF MINE	Minable Reserve	86400 m ³
METHOD OF MINING	Manual	
DRILLING AND BLASTING	Not required	
WATER DEMAND	1.5 KLD	
SOURCE OF WATER	From nearby village	
ULTIMATE DEPTH OF THE MINING	3 m	
AVERAGE MAN POWER /DAY	19	
SOLID WASTE INCLUDING RESIDUAL RIVER BED MATERIALS	2.5 kg/day domestic waste	
NEAREST RAILWAY STATION	Maheshpur Railway Station is about 13.5 km in South-West	
NEAREST STATE HIGHWAY	Belgram - Bolgona - Kanla Rd, 2.4 km towards East	
NEAREST AIRPORT	Netaji Subhash Chandra Bose International Airport, 147 km towards South-East	
NEAREST RESERVE FOREST/ PROTECTED FOREST/ FOREST	No (within 10 km radius)	

**Sd/-
District Magistrate & Collector
Murshidabad**

Form- A (RAJYADHARPUR-03)

[see sub-rule (1) of rule 9 of West Bengal Minor minerals 9 (Auction) Rules, 2016]

MINING LEASE AREA (IN HA)	3.6		
LOCATION OF MINE (CENTRE WITH COORDINATE): LOCATION MOUZA, BLOCK, P.S. AND GIS COORDINATES (LATITUDE & LONGITUDE) OF THE CENTRAL AXIS OF THE MINING AREA	State	West Bengal	
	District	Murshidabad	
	PS	Burwan	
	Mouza	Rajyadharpur	
	JL No	135	
	Plot No	59(P), 60(P)	
		Latitude	Longitude
	Central Axis	23°53'7.59"N 23°53'2.40"N	87°55'9.71"E 87°55'9.24"E
RIVER/CANAL/KHAL	Mayurakshi River		
TOPOGRAPHY	The district is nearly flat with a gentle slope from West to East		
MINERALS OF THE MINE	Sand		
LIFE OF THE MINE	5 years		
PROPOSED PRODUCTION OF MINE	Mirable Reserve	86400 m ³	
METHOD OF MINING	Manual		
DRILLING AND BLASTING	Not required		
WATER DEMAND	1.5 KLD		
SOURCE OF WATER	From nearby village		
ULTIMATE DEPTH OF THE MINING	3 m		
AVERAGE MAN POWER /DAY	19		
SOLID WASTE INCLUDING RESIDUAL RIVER BED MATERIALS	2.5 kg/day domestic waste		
NEAREST RAILWAY STATION	Maheshpur Railway Station is about 13.5 km in South-West		
NEAREST STATE HIGHWAY	Belgram - Bolgona - Kalna Rd, 2.4 km towards East		
NEAREST AIRPORT	Netaji Subhash Chandra Bose International Airport, 147 km towards South-East		
NEAREST RESERVE FOREST/ PROTECTED FOREST/ FOREST	No (within 10 km radius)		

Sd/-
District Magistrate & Collector
Murshidabad

Form- A (RAJYADHARPUR-04)

[see sub-rule (1) of rule 9 of West Bengal Minor minerals 9 (Auction) Rules, 2016]

MINING LEASE AREA (IN HA)	3.6			
LOCATION OF MINE (CENTRE WITH COORDINATE): LOCATION MOUZA, BLOCK, P.S. AND GIS COORDINATES (LATITUDE & LONGITUDE) OF THE CENTRAL AXIS OF THE MINING AREA	State	West Bengal		
	District	Murshidabad		
	PS	Burwan		
	Mouza	Rajyadharpur		
	JL No	135		
	Plot No	59(P), 60(P)		
		Latitude	Longitude	
	Central Axis	23°53'5.02"N 23°53'0.01"N	87°55'14.55"E 87°55'14.36"E	
RIVER/CANAL/KHAL	Mayurakshi River			
TOPOGRAPHY	The district is nearly flat with a gentle slope from West to East			
MINERALS OF THE MINE	Sand			
LIFE OF THE MINE	5 years			
PROPOSED PRODUCTION OF MINE	Minable Reserve	86400 m ³		
METHOD OF MINING	Manual			
DRILLING AND BLASTING	Not required			
WATER DEMAND	1.5 KLD			
SOURCE OF WATER	From nearby village			
ULTIMATE DEPTH OF THE MINING	3 m			
AVERAGE MAN POWER /DAY	19			
SOLID WASTE INCLUDING RESIDUAL RIVER BED MATERIALS	2.5 kg/day domestic waste			
NEAREST RAILWAY STATION	Maheshpur Railway Station is about 13.5 km in South-West			
NEAREST STATE HIGHWAY	Belgram - Bolgona - Kalna Rd, 2.4 km towards East			
NEAREST AIRPORT	Netaji Subhash Chandra Bose International Airport, 147 km towards South-East			
NEAREST RESERVE FOREST/ PROTECTED FOREST/ FOREST	No (within 10 km radius)			

Sd/-
District Magistrate & Collector
Murshidabad

Form- A (BHA13)

[See sub-rule (1) of rule 9 of West Bengal Minor Minerals 9 (Auction) Rules, 2016]

MINING LEASE AREA (IN HA)	2.2 ha		
LOCATION OF MINE (CENTRE WITH CO-ORDINATE): LOCATION MOUZA, BLOCK, P.S. AND GIS COORDINATE (LATITUDE & LONGITUDE) OF THE CENTRAL AXIS OF THE MINING AREA.	State:	West Bengal	
	District:	Murshidabad	
	PS:	Bharatpur	
	Block	Bharatpur-I	
	Mouza & JL no	Shunia, 70	
	Plot no	1 (P)	
		Latitude	Longitude
Central Axis	23°55'2.3"N	88°5'38.7"E	
RIVER/ CANAL/ KHAL	Mayurakshi River		
TOPOGRAPHY	Flat		
MINERALS OF THE MINE	Sand		
LIFE OF THE MINE	5 years		
PROPOSED PRODUCTION OF MINE	52800 cum/annum		
METHOD OF MINING	Manual		
DRILLING AND BLASTING	As mining will be done in manual method, thus drilling and blasting are not required		
WATER DEMAND	21 KLD		
SOURCE OF WATER	Nearby villages for drinking water		
ULTIMATE DEPTH OF THE MINING	3m		
AVERAGE MAN POWER/DAY	116		
SOLID WASTE INCLUDING RESIDUAL RIVER BED MATERIALS	No solid waste will be generated during mining		
NEAREST RAILWAY STATION	Murshidabad Railway Station, 38km, NE		
NEAREST STATE HIGHWAY/ NATIONAL HIGHWAY	SH-7, 12km, SE		
NEAREST AIRPORT	Netaji Subhash Chandra Bose International Airport, 142 km, SSE		
NEAREST RESERVE FOREST/ PROTECTED FOREST/ FOREST	No notified forest area is present within 5 km of the project site.		

Sd/-

**District Magistrate & Collector
Murshidabad**

Form- A (BHA14)

[See sub-rule (1) of rule 9 of West Bengal Minor Minerals 9 (Auction) Rules, 2016]

MINING LEASE AREA (IN HA)	1.2 ha		
LOCATION OF MINE (CENTRE WITH CO-ORDINATE): LOCATION MOUZA, BLOCK, P.S. AND GIS COORDINATE (LATITUDE & LONGITUDE) OF THE CENTRAL AXIS OF THE MINING AREA.	State:	West Bengal	
	District:	Murshidabad	
	PS:	Bharatpur	
	Block	Bharatpur-I	
	Mouza & JL no	Madanpur Dafarpur, 73	
	Plot no	1(1)	
		Latitude	Longitude
Central Axis	23°55'12.3"N	88°5'53.9"E	
RIVER/ CANAL/ KHAL	Mayurakshi River		
TOPOGRAPHY	Flat		
MINERALS OF THE MINE	Sand		
LIFE OF THE MINE	5 years		
PROPOSED PRODUCTION OF MINE	28800 cum/annum		
METHOD OF MINING	Manual		
DRILLING AND BLASTING	As mining will be done in manual method, thus drilling and blasting are not required		
WATER DEMAND	12 KLD		
SOURCE OF WATER	Nearby villages for drinking water		
ULTIMATE DEPTH OF THE MINING	3m		
AVERAGE MAN POWER/DAY	63		
SOLID WASTE INCLUDING RESIDUAL RIVER BED MATERIALS	No solid waste will be generated during mining		
NEAREST RAILWAY STATION	Murshidabad Railway Station, 38km, NE		
NEAREST STATE HIGHWAY/ NATIONAL HIGHWAY	SH-7, 13km, SE		
NEAREST AIRPORT	Netaji Subhash Chandra Bose International Airport, 143 km, SSE		
NEAREST RESERVE FOREST/ PROTECTED FOREST/ FOREST	No notified forest area is present within 10 km of the project site.		

Sd/-

**District Magistrate & Collector
Murshidabad**

Form- A (BHA15)

[See sub-rule (1) of rule 9 of West Bengal Minor Minerals 9 (Auction) Rules, 2016]

MINING LEASE AREA (IN HA)	1.8 ha		
LOCATION OF MINE (CENTRE WITH CO-ORDINATE): LOCATION MOUZA, BLOCK, P.S. AND GIS COORDINATE (LATITUDE & LONGITUDE) OF THE CENTRAL AXIS OF THE MINING AREA.	State:	West Bengal	
	District:	Murshidabad	
	PS:	Bharatpur	
	Block	Bharatpur-I	
	Mouza & JL no	Madanpur Dafarpur, 73	
	Plot no	11(P)	
		Latitude	Longitude
Central Axis	23°55'41.4"N	88°6'26.2"E	
RIVER/ CANAL/ KHAL	Mayurakshi River		
TOPOGRAPHY	Flat		
MINERALS OF THE MINE	Sand		
LIFE OF THE MINE	5 years		
PROPOSED PRODUCTION OF MINE	43200 cum/annum		
METHOD OF MINING	Manual		
DRILLING AND BLASTING	As mining will be done in manual method, thus drilling and blasting are not required		
WATER DEMAND	12 KLD		
SOURCE OF WATER	Nearby villages for drinking water		
ULTIMATE DEPTH OF THE MINING	3m		
AVERAGE MAN POWER/DAY	18		
SOLID WASTE INCLUDING RESIDUAL RIVER BED MATERIALS	No solid waste will be generated during mining		
NEAREST RAILWAY STATION	Murshidabad Railway Station, 30km, NE		
NEAREST STATE HIGHWAY/ NATIONAL HIGHWAY	SH-7, 11km, SE		
NEAREST AIRPORT	Netaji Subhash Chandra Bose International Airport, 144 km, SSE		
NEAREST RESERVE FOREST/ PROTECTED FOREST/ FOREST	No notified forest area is present within 5 km of the project site.		

Sd/-

**District Magistrate & Collector
Murshidabad**

Form- A (KAN02)

[See sub-rule (1) of rule 9 of West Bengal Minor Minerals 9 (Auction) Rules, 2016]

MINING LEASE AREA (IN HA)	1.7 ha		
LOCATION OF MINE (CENTRE WITH CO-ORDINATE): LOCATION MOUZA, BLOCK, P.S. AND GIS COORDINATE (LATITUDE & LONGITUDE) OF THE CENTRAL AXIS OF THE MINING AREA.	State:	West Bengal	
	District:	Murshidabad	
	PS:	Kandi	
	Block	Kandi	
	Mouza & JL no	Hijal, 41	
	Plot no	6167 (P)	
		Latitude	Longitude
Central Axis	23°57'45.0"N	88°7'35.1"E	
RIVER/ CANAL/ KHAL	Mayurakshi River		
TOPOGRAPHY	Flat		
MINERALS OF THE MINE	Sand		
LIFE OF THE MINE	5 years		
PROPOSED PRODUCTION OF MINE	40800 cum/annum		
METHOD OF MINING	Manual		
DRILLING AND BLASTING	As mining will be done in manual method, thus drilling and blasting are not required		
WATER DEMAND	17 KLD		
SOURCE OF WATER	Nearby villages for drinking water		
ULTIMATE DEPTH OF THE MINING	3m		
AVERAGE MAN POWER/DAY	89		
SOLID WASTE INCLUDING RESIDUAL RIVER BED MATERIALS	No solid waste will be generated during mining		
NEAREST RAILWAY STATION	Murshidabad Railway Station, 35km, NE		
NEAREST STATE HIGHWAY/ NATIONAL HIGHWAY	SH-7, 15km, SE		
NEAREST AIRPORT	Netaji Subhash Chandra Bose International Airport, 147 km, SSE		
NEAREST RESERVE FOREST/ PROTECTED FOREST/ FOREST	No notified forest area is present within 10 km of the project site.		

Sd/-

**District Magistrate & Collector
Murshidabad**

Form- A (Kogram-01)

[See sub-rule (1) of rule 9 of West Bengal Minor Minerals 9 (Auction) Rules, 2016]

MINING LEASE AREA (IN HA)	4.00 ha		
LOCATION OF MINE (CENTRE WITH CO-ORDINATE): LOCATION MOUZA, BLOCK, P.S. AND GIS COORDINATE (LATITUDE & LONGITUDE) OF THE CENTRAL AXIS OF THE MINING AREA.	State:	West Bengal	
	District:	Murshidabad	
	PS:	Burwan	
	Block	Burwan	
	Mouza & JL no	Kogram, 109	
	Plot no	1/2290 (P), 1/2440, 2 (P)	
		Latitude	Longitude
	23°52'30.47"N	87°53'53.44"E	
	23°52'27.65"N	87°53'52.63"E	
	23°52'25.06"N	87°53'53.75"E	
RIVER/ CANAL/ KHAL	Mayurakshi River		
TOPOGRAPHY	The district is nearly flat with a gentle slope from West to East		
MINERALS OF THE MINE	Sand		
LIFE OF THE MINE	5 years		
PROPOSED PRODUCTION OF MINE	91074.37 cum/annum		
METHOD OF MINING	Manual		
DRILLING AND BLASTING	Not required		
WATER DEMAND	1.5 KLD		
SOURCE OF WATER	From Nearby village		
ULTIMATE DEPTH OF THE MINING	3m		
AVERAGE MAN POWER/DAY	19		
SOLID WASTE INCLUDING RESIDUAL RIVER BED MATERIALS	2.5 kg/day domestic waste		
NEAREST RAILWAY STATION	Daskolgram Railway Station is about 15.2 km in South-South-East		
NEAREST STATE HIGHWAY/ NATIONAL HIGHWAY	Belgram-Bolgona-Kalna Road, 6 km. towards East		
NEAREST AIRPORT	Netaji Subhash Chandra Bose International Airport, 147.66 km. towards South-East		
NEAREST RESERVE FOREST/ PROTECTED FOREST/ FOREST	No (within 10 km. radius)		

Sd/-

**District Magistrate & Collector
Murshidabad**

Form- A (Kogram-03)

[See sub-rule (1) of rule 9 of West Bengal Minor Minerals 9 (Auction) Rules, 2016]

MINING LEASE AREA (IN HA)	4.00 ha		
LOCATION OF MINE (CENTRE WITH CO-ORDINATE): LOCATION MOUZA, BLOCK, P.S. AND GIS COORDINATE (LATITUDE & LONGITUDE) OF THE CENTRAL AXIS OF THE MINING AREA.	State:	West Bengal	
	District:	Murshidabad	
	PS:	Burwan	
	Block	Burwan	
	Mouza & JL no	Kogram, 109	
	Plot no	1/2290 (P), 1/2291 (P), 2 (P)	
		Latitude	Longitude
	Central Axis	23°52'31.03"N	87°54'2.03"E
		23°52'28.28"N	87°54'2.20"E
		23°52'25.89"N	87°54'1.90"E
RIVER/ CANAL/ KHAL	Mayurakshi River		
TOPOGRAPHY	The district is nearly flat with a gentle slope from West to East		
MINERALS OF THE MINE	Sand		
LIFE OF THE MINE	5 years		
PROPOSED PRODUCTION OF MINE	91074.37 cum/annum		
METHOD OF MINING	Manual		
DRILLING AND BLASTING	Not required		
WATER DEMAND	1.5 KLD		
SOURCE OF WATER	From Nearby village		
ULTIMATE DEPTH OF THE MINING	3m		
AVERAGE MAN POWER/DAY	19		
SOLID WASTE INCLUDING RESIDUAL RIVER BED MATERIALS	2.5 kg/day domestic waste		
NEAREST RAILWAY STATION	Daskolgram Railway Station is about 15.2 km in South-South-East		
NEAREST STATE HIGHWAY/ NATIONAL HIGHWAY	Belgram-Bolgona-Kalna Road, 6 km. towards East		
NEAREST AIRPORT	Netaji Subhash Chandra Bose International Airport, 147.66 km. towards South-East		
NEAREST RESERVE FOREST/ PROTECTED FOREST/ FOREST	No (within 10 km. radius)		

Sd/-

**District Magistrate & Collector
Murshidabad**

Form- A (Kogram-05)

[See sub-rule (1) of rule 9 of West Bengal Minor Minerals 9 (Auction) Rules, 2016]

MINING LEASE AREA (IN HA)	3.94 ha		
LOCATION OF MINE (CENTRE WITH CO-ORDINATE): LOCATION MOUZA, BLOCK, P.S. AND GIS COORDINATE (LATITUDE & LONGITUDE) OF THE CENTRAL AXIS OF THE MINING AREA.	State:	West Bengal	
	District:	Murshidabad	
	PS:	Burwan	
	Block	Burwan	
	Mouza & JL no	Kogram, 109	
	Plot no	1/2441 (P), 1/2290 (P), 1/2291 (P), 2 (P)	
		Latitude	Longitude
	23°52'38.85"N	87°54'10.96"E	
	23°52'35.50"N	87°54'9.94"E	
	23°52'31.88"N	87°54'9.67"E	
	23°52'29.04"N	87°54'9.43"E	
RIVER/ CANAL/ KHAL	Mayurakshi River		
TOPOGRAPHY	The district is nearly flat with a gentle slope from West to East		
MINERALS OF THE MINE	Sand		
LIFE OF THE MINE	5 years		
PROPOSED PRODUCTION OF MINE	89708.24 cum/annum		
METHOD OF MINING	Manual		
DRILLING AND BLASTING	Not required		
WATER DEMAND	1.5 KLD		
SOURCE OF WATER	From Nearby village		
ULTIMATE DEPTH OF THE MINING	3m		
AVERAGE MAN POWER/DAY	19		
SOLID WASTE INCLUDING RESIDUAL RIVER BED MATERIALS	2.5 kg/day domestic waste		
NEAREST RAILWAY STATION	Daskolgram Railway Station is about 15.2 km in South-South-East		
NEAREST STATE HIGHWAY/ NATIONAL HIGHWAY	Belgram-Bolgona-Kalna Road, 6 km. towards East		
NEAREST AIRPORT	Netaji Subhash Chandra Bose International Airport, 147.66 km. towards South-East		
NEAREST RESERVE FOREST/ PROTECTED FOREST/ FOREST	No (within 10 km. radius)		

Sd/-

**District Magistrate & Collector
Murshidabad**

Form- A (Senai-03)

[See sub-rule (1) of rule 9 of West Bengal Minor Minerals 9 (Auction) Rules, 2016]

MINING LEASE AREA (IN HA)	0.60 ha		
LOCATION OF MINE (CENTRE WITH CO-ORDINATE): LOCATION MOUZA, BLOCK, P.S. AND GIS COORDINATE (LATITUDE & LONGITUDE) OF THE CENTRAL AXIS OF THE MINING AREA.	State:	West Bengal	
	District:	Murshidabad	
	PS:	Burwan	
	Block	Burwan	
	Mouza & JL no	Shenai, 102	
	Plot no	1569 (P), 1571 (P)	
		Latitude	Longitude
	23°52'48.19"N	87°53'35.89"E	
	23°52'45.39"N	87°53'37.15"E	
	23°52'44.08"N	87°53'35.63"E	
	Central Axis		
RIVER/ CANAL/ KHAL	Mayurakshi River		
TOPOGRAPHY	The district is nearly flat with a gentle slope from West to East		
MINERALS OF THE MINE	Sand		
LIFE OF THE MINE	5 years		
PROPOSED PRODUCTION OF MINE	14400.5 cum/annum		
METHOD OF MINING	Manual		
DRILLING AND BLASTING	Not required		
WATER DEMAND	1.5 KLD		
SOURCE OF WATER	From Nearby village		
ULTIMATE DEPTH OF THE MINING	3m		
AVERAGE MAN POWER/DAY	19		
SOLID WASTE INCLUDING RESIDUAL RIVER BED MATERIALS	2.5 kg/day domestic waste		
NEAREST RAILWAY STATION	Daskolgram Railway Station is about 15.2 km in South-South-East		
NEAREST STATE HIGHWAY/ NATIONAL HIGHWAY	Belgram-Bolgona-Kalna Road, 6 km. towards East		
NEAREST AIRPORT	Netaji Subhash Chandra Bose International Airport, 147.66 km. towards South-East		
NEAREST RESERVE FOREST/ PROTECTED FOREST/ FOREST	No (within 10 km. radius)		

Sd/-

**District Magistrate & Collector
Murshidabad**

BID DOCUMENT FOR MINOR MINERALS

**GOVERNMENT OF WEST BENGAL / DISTRICT COMMITTEE OF
MURSHIDABAD**

This Bid Document is non-transferable.

The copy of this Bid Document is available on the website <[https://www.murshidabad.gov.in /
www.dllromsd.org](https://www.murshidabad.gov.in / www.dllromsd.org)>

Contents

Important information	
1.	3
Definitions	
2.	4
Introduction	
3.	5
The Concession Area	
4.	5
Eligibility	
5.	6
Review period and site visit	
6.	6
7. Bidding process.....	6
8. Reserve Price.....	6
9. Declaration of Successful Bidder and grant of mining lease.....	7
9.1. Issuance of letter of intent.....	7
9.2. Continuation as a Successful Bidder.....	7
9.3. Grant of mining lease.....	7
10. General conditions regarding bidding process.....	8
10.1. Language.....	8
10.2. Documents and information.....	8
10.3. Overriding effect.....	8
10.4. Cost of bidding.....	8
10.5. Verification by the State Government and disqualification.....	8
10.6. Amendment of Bid Document.....	9
10.7. Rejection of bids.....	9
11. Earnest money.....	10
Fraud and Corrupt Practices	
12.	11
Other provisions	
13.	11
Governing law	
13.1.	11
13.2. Right of State Government / District Committee.....	11
13.3. Manner of Conduction of e-Auction Process.....	12

1. Important Information

- 1.1.** The Bid Document has been issued pursuant to notification of an area with the intent to carry out e-Auction through competitive bidding for grant of a [mining lease / prospecting license-cum-mining lease] for mineral specified herein below, pursuant to the Act and the rules made there under. All information provided in this Bid Document should be read together with the Act and the rules made there under. In the event of a conflict between this Bid Document and the Act or the rules, the Act or the rules, as the case may be, shall prevail.
- 1.2.** The information contained in this Bid Document or subsequently provided to Bidders(s), whether verbally or in documentary or any other form by or on behalf of the State Government or any of its employees or advisors, is provided to Bidder(s) on the terms and conditions set out in this Bid Document.
- 1.3.** This Bid Document is neither an agreement nor an offer by the State Government / District Committee to the prospective Bidders or any other person. The purpose of this Bid Document is to provide interested parties with information that may be useful to them in making their bids pursuant to this Bid Document. This Bid Document includes statements which reflect various assumptions and assessments arrived at by the State Government / District Committee in relation to the mineral block. Such assumptions, assessments and statements do not purport to contain all the information that each Bidder may require. The assumptions, assessments, statements and information contained in the Bid Document may not be adequate, accurate and complete in all respect. Each Bidder should, therefore, conduct its own investigations and analysis and should check the accuracy, adequacy, correctness, reliability and completeness of the assumptions, assessments, statements and information contained in this Bid Document and obtain independent advice from appropriate sources.
- 1.4.** Information provided in this Bid Document to the Bidder(s) has been collated from several sources some of which may depend upon interpretation of Applicable Law. The information given is not intended to be an exhaustive account of statutory requirements and should not be regarded as exhaustive and complete in all respect. The State Government / District Committee accepts no responsibility for the accuracy or otherwise for any statement / data contained in this Bid Document.

- 1.5. The State Government / District Committee, its employees and advisors make no representation or warranty and shall have no liability to any person, including any Bidder under any law, statute, rules or regulations or tort, principles of restitution or unjust enrichment or otherwise for any loss, damages cost or expense which may arise from or be incurred or suffered on account of anything contained in this Bid Document or otherwise, including the accuracy, adequacy, correctness, completeness or reliability of the Bid Document and any assessment, assumption, statement or information contained therein or deemed to form part of this Bid Document or arising in any way from participation in this Bid process.
- 1.6. The State Government / District Committee may in its absolute discretion, but without being under any obligation to do so, update, amend or supplement the information, assessment or assumptions contained in this Bid Document.
- 1.7. The issue of this Bid Document does not imply that the State Government is bound to select a Bidder as Successful Bidder for the mineral block and the State Government / District Committee reserves the right to reject all or any of the Bidders or bids without assigning any reason whatsoever.
- 1.8. Each Bidder shall bear all its costs associated with or relating to the preparation and submission of its bid including but not limited to preparation, complying, postage, delivery fees, expenses associated with any demonstrations or presentations which may be required by the State Government / District Committee or any other costs incurred in connection with or relating to its bid.
- 1.9. This Bid Document is not transferable.

2. Definitions

The words and expressions used herein but not defined herein shall have the same meaning as assigned to them in the Act or the rules made there under. The following definitions apply to this Bid Document, unless the context otherwise requires:

- 2.1. “**Act**” means the Mines and Minerals (Development and Regulation) Act, 1957 (as amended).
- 2.2. “**Applicable Law**” shall mean all applicable statutes, laws, by-laws, rules, regulations, orders, ordinances, protocols, codes, guidelines, policies, notices, directions, judgements, decrees or other requirements or official directive of any Governmental Authority or court or other law, rule or regulation approval from the relevant Governmental Authority, Government resolution, directive, or other Government restriction or any similar form of decision of, or determination by, or any interpretation or adjudication having the force of law in India.

- 2.3. “Auction Rules”** mean the West Bengal Minor Mineral (Auction) Rules, 2016.
- 2.4. “Bidder”** means a person who has purchased / downloaded this Bid Document and intends to participate in the e-Auction process of minor minerals.
- 2.5. “Concession Area”** means particulars of the area as more particularly described in Form A of West Bengal Minor Minerals (Auction) Rules, 2016 (henceforth mentioned as Auction Rules).
- 2.6. “Performance Security”** means a bank guarantee as provided in rule 11 of the West Bengal Minor Minerals (Auction) Rules (henceforth mentions as Auction Rules).
- 2.7. “State Government”** means Government of West Bengal.
- 2.8. “Bid Document”** means this Bid Document with addends, if any, to this Bid Document.
- 2.9. “District Committee”** means the District Committee for competitive bidding of minor minerals to be constituted by the State Government, by a notification, for the purpose of rule 6, rule 8 and rule 9 of West Bengal Minor Minerals (Auction) Rules, 2016 [Rule 2(d) of West Bengal Minor Minerals (Auction) Rules, 2016].

Note: Words and expressions used and not defined in this Bid Document but defined in the Act and rules made there under shall have the same meanings as respectively assigned to them in the Act of rules made there under.

3. Introduction

- 3.1.** In exercise of powers conferred by the section 15 of the Act, the State Government has notified the West Bengal Minor Mineral (Auction) Rules, 2016. The Bidders are encouraged to acquaint themselves with the Act and the rules made there under.
- 3.2.** This Bid Document is being issued by the State Government / District Committee, for e-Auction through competitive bidding for grant of a [mining lease / composite license] over the Concession Area.
- 3.3.** The e-Auction would be conducted in accordance with Act, the Auction Rules, any other order or notification issued by the State Government / District Committee pursuant to the Act and this Bid Document.

4. The Concession Area

The information regarding the Concession Area is available in Form A as provided with e-Auction notice.

5. Eligibility

- (a) Eligibility of bidders for minor minerals shall be as prescribed in rule 4 of West Bengal Minor Mineral Concession Rules, 2016 and rule 6 of Auction Rules.
- (b) (i) In terms of rule 6 (2) of West Bengal Minor Minerals (Auction) Rules, 2016 the District Committee fixed the solvency amount for participation in the on line bidding is 40% of the reserve price for the sand block to be auctioned.
- (ii) The State Government / District Committee reserve the right to allow / reject the bid of the Successful Bidders with respect to any sand block. If found any discrepancy in due course then the bidding process / bidder would be summarily cancelled at any stage.
- (iii) The Successful Bidders should submit an affidavit in support of his ascertainment of the location / size / capacity / geographical condition and legal aspect of the auctioned sand block before submission of the bidding amount.
- (iv) The Successful Bidders should submit an affidavit in support of their compliance to all the terms and conditions finalized by the DEIAA and DEAC (as prescribed by the Ministry of Environment, Forest and Climatic Change).
- (c) The eligibility conditions shall be used only for the purposes of determination of eligibility for participating in the e-Auction. The Successful Bidder shall be decided solely on the basis of Bid Amount as submitted by the eligible Bidders.

6. Review period and site visit

- 6.1. Pursuant to sub-rule (3) of Rule 9 of the West Bengal Minor Minerals (Auction) Rules, 2016, the Bidders shall be provided a fixed period of 5 (five) days to study the Bid Document and the bidding process shall commence only after such period 5 (five) days.
- 6.2. Such period of 5 days would commence on 05/01/2017 from 11.00 a.m and would end on 11/01/2017 at 5 p.m.
- 6.3. During such period the Bidders may undertake the site visit to Concession Area at their own cost and risk to ascertain for themselves the site conditions, location, communication, climate, availability of power, and any other matter considered relevant by them.
- 6.4. The site visit to the Concession Area shall be conducted with prior notice to the State Government / District Committee through the following URL [www.murshidabad.gov.in / www.dllromsd.org].

7. Bidding Process

Pursuant to Rule 9 of the West Bengal Minor Minerals (Auction) Rules, 2016, the e-Auction shall be an ascending forward online electronic auction. The manner of conduction of e-Auction has been prescribed in rule 9 of the West Bengal Minor Minerals (Auction) Rules, 2016.

8. Reserve Price

The Reserve Price is 75% of the value of mineral despatch, as prescribed by the District Committee, in terms of rule 8 of the West Bengal Minor Minerals (Auction) Rules, 2016, details of which is available in the official website of the District & also with the additional documents in the NIC portal.

9. Declaration of Successful Bidder and grant of mining lease

Pursuant to Rule 9 of the West Bengal Minor Minerals (Auction) Rules, 2016, the mining lease shall be granted to the Successful Bidder in the following manner:

9.1. Issuance of letter of intent:

In terms of Rule 10 of the West Bengal Minor Minerals (Auction) Rules, 2016, a Grant Order / Letter of Intent (LoI) shall be issued by the State Government / District Committee to the Successful Bidder upon payment of one third (1/3) of the bid amount within 15 (fifteen) days after being so declared.

9.2. Continuation as a Successful Bidder:

The “**Successful Bidder**” shall remain so-

- (a) Continuing to be in compliance with all the terms and conditions of eligibility and Grant Order / LoI;
- (b) Payment of the first instalment of rest of the Bid Amount as to be provided in the LoI;
- (c) Furnishing the Performance Security pursuant to the Auction Rules.
- (d) Furnishing undertaking for payment of the balance Bid Amount as prescribed in rule 10 of the West Bengal Minor Mineral (Auction) Rules, 2016.
- (e) Furnish undertaking for payment towards preparation of PFR, Form-1M and Mine Plan, if the same has already been made prepared by the District Committee, as an exercise of facilitation to the prospective lessee(s).

9.3. Grant of mining lease:

Subsequent to selection of the Successful Bidder and compliance of the conditions as stated in G.O / LoI, he shall pay the second instalment of the Bid Amount [adjusted with the Earnest money as per provisions of rule 9(6) of the West Bengal Minor Minerals (Auction) Rules, 2016]. Upon such payment the District Authority shall execute the mining lease deed to the Successful Bidder within a period of 30 days from the date of payment. The date of the commencement of the period for which the mining lease deed is executed shall be the date on which a duly executed mining lease is registered.

10. General conditions regarding Bidding process

10.1. Language

The Bid and all communications in relation to or concerning the Bid Document and the Bid are required to be in the English language.

10.2. Documents and information

The documents including the Bid Document and all attached documents, provided by the State Government / District Committee are and shall remain or become the properties of the State Government / District Committee. Bidders are required to treat all such information as strictly confidential and shall not use it for any purpose other than for preparation and submission of their bid. The provisions of this Clause shall also apply to bids and all other documents submitted by the Bidders in relation to the bid, and the State Government / District Committee will not return to the Bidders any bid, document or any information provided along there with.

10.3. Overriding effect

If there is a conflict between this Bid Document and LoI / G.O or Mining Lease Deed, the LoI / G.O or Mining Lease Deed shall prevail over the Bid Document.

10.4. Cost of bidding

The Bidders shall be responsible for all of the costs associated with the preparation of their bids and their participation in the Bidding process. The State Government will not be responsible or in any way liable for such costs, regardless of the conduct or outcome of the Bidding process.

10.5. Verification by the State Government and disqualification

10.5.1. The State Government / District Committee reserves the right to verify all statements, information and documents submitted by the Bidder in response to the Bid Document and Bidding and the Bidder shall, when so required by the State Government / District Committee, make available all such information, evidence and documents as may be necessary for such verification. Any such verification or lack of such verification by the State Government / District Committee shall not relieve the Bidder of its obligations or liabilities here under nor will it affect any rights of the State Government / District Committee there under.

10.5.2. The State Government / District Committee reserves the right to reject any bid, and appropriate the entire Earnest Money if:

- (a) At any time, a misrepresentation is made or uncovered.
- (b) The Bidder does not provide, within the time specified by the State Government / District Committee, the supplemental information sought by the State Government / District Committee for evaluation of the bid, or

(c) Any act or omission of the Bidder results in violation of or non-compliance with the Act, the rules there under, this Bid Document, or any other document referred therein or issued pursuant thereto or any Applicable Law relevant for the Bid process.

10.5.3. Any rejection of a bid under Clause 10.5.2 may lead to the disqualification of the Bidder for bidding for any e-Auction or allotment conducted by the State Government / District Committee for a period of five years starting from the date of appropriation of the Earnest Money or any other earlier date specified by the State Government / District Committee.

10.5.4. In the aforementioned events, the State Government shall be entitled to forfeit and appropriate the bid Security or Performance Security, as the case may be, without prejudice to any other right or remedy that may be available to the State Government / District Committee under the Bid Document, or otherwise, without any liability whatsoever.

10.6. Amendment of Bid Document

10.6.1. At any time prior to the Bid Due Date, the State Government / District Committee may, for any reason, whether at its own initiative or in response to clarifications requested by a Bidder, amend the Bid Document.

10.6.2. Any amendment issued here under will be in writing and shall be made available to in NIC portal and shall be deemed to be part of the Bid Document.

10.7. Rejection of bids

10.7.1. Notwithstanding anything contained in this Bid Document, the State Government / District Committee reserves the right to reject any bid and / or to annul the bidding process and reject all bids at any time without any liability or any obligation for such acceptance, rejection or annulment, and without assigning any reasons thereof.

10.7.2. In case such cancellation is pursuant to non-compliance by the relevant Bidders vis-a vis submissions of bid then the State Government / District Committee reserves the right to appropriate the relevant Bid Security submitted by such non-compliant Bidders.

10.7.3. The State Government / District Committee reserves the right not to proceed with the Bidding process at any time, without notice or liability, and to reject any bid without assigning any reasons.

10.7.4. Without prejudice to the generality of the foregoing, the State Government / District Committee reserves the right to reject any bid on

Any criteria specified in this Bid Document, including without limitation, the following:

- (a) Bids have not been submitted as per Bid Document
- (b) Bid is not in conforming to the existing Act and rules made there under.
- (c) Bids have been submitted without Earnest Money or period of validity.

11. Earnest Money:

11.1. In terms of the Rule 9 (4) of the West Bengal Minor Minerals (Auction) Rules, 2016 the Earnest Money shall be ten percent (10%) of the Reserve Price and the District Committee fixed that it shall be in the form of Demand Draft to be drawn in favour of the SRO-II & DDO, DL&LRO Office, Murshidabad.

11.2. Save and except as provided in this Bid Document, the Earnest Money of unsuccessful Bidders will be returned by the District Committee, without any interest, as promptly as possible [Rule 9(5) of West Bengal Minor Minerals (Auction) Rules, 2016].

11.3. The Successful Bidder's Earnest Money will be adjusted with the Bid Amount, without any interest, upon furnishing of the Performance Security in accordance with the provisions thereof [Rule 9(6) of West Bengal Minor Minerals (Auction) Rules, 2016].

11.4. The State Government / District Committee shall be entitled to forfeit and appropriate the Earnest Money as damages, amongst others in any of the events specified in this Bid Document. The Bidder, by submitting its bid pursuant to this Bid Document, shall be deemed to have acknowledged and confirmed that the State Government / District Committee will suffer loss and damage on account of withdrawal of its bid or for any other default by the Bidder during the period of bid validity as specified in this Bid Document.

12. Fraud and Corrupt Practices

12.1. The Bidders and their respective officers, employees, agents and advisers shall observe the highest standard of ethics during the Bidding process and subsequent to the grant of the mining lease. Notwithstanding anything to the contrary contained herein, the State Government / District Committee may reject a bid, withdraw the mining lease, as the case may be, without being liable in any manner whatsoever to the Bidder. The Successful Bidder, as the case may be, if the State Government / District Committee determine that the Bidder, or Successful Bidder, as the case may be, has, directly or indirectly or through an agent, engaged in Corrupt Practice, Fraudulent Practice, Coercive Practice, Undesirable Practice or Restrictive Practice in the Bidding process,

in such an event, the State Government / District Committee shall be entitled to forfeit and appropriate the Earnest Money or Performance Security, as the case may be, as damages, without prejudice to any other right or remedy that may be available to the State Government / District Committee under the Bid Document and / or otherwise.

12.2. Without prejudice to the rights of the State Government / District Committee hereinabove stated and the rights and remedies which the State Government / District Committee may have under the mining lease or otherwise if a Bidder, Successful bidder, as the case may be, is found by the State Government / District Committee to have directly or indirectly or through an agent, engaged or indulged in any Corrupt Practice, Fraudulent Practice, Coercive Practice, Undesirable Practice or Restrictive Practice during the bidding process, or after the grant of the mining lease, such Bidder or Successful Bidder shall not be eligible to participate in any Bid / Tender or Tender Document issued by the State Government / District Committee during a period of five years from the date such Bidder or Successful Bidder, as the case may be, is found by the State Government to have directly or indirectly or through an agent, engaged or indulged in any Corrupt Practice, Fraudulent practice, Coercive Practice, Undesirable Practice or Restrictive Practices, as the case may be.

13. Other provisions

13.1. Governing law

The Bidding process shall be governed by, and construed in accordance with, the laws of India.

13.2. Right of State Government / District Committee

13.2.1. The State Government / District Committee, in its sole discretion and without incurring any obligation or liability, reserves the right, at any time, to;

- (a) Suspend and / or cancel the Bidding process and / or amend and / or supplement the Bidding process or modify the dates or other terms and conditions relating thereto;
- (b) Consult with any Bidder in order to receive clarification or further information;
- (c) Retain any information and / or evidence submitted to the State Government / District Committee by, on behalf of, and / or in relation to any Bidder; and / or
- (d) Independently verify, disqualify, reject and / or accept any and all submissions or other information and / or evidence submitted by or on behalf of any Bidder.

13.2.2. It shall be deemed that by submitting the bid, the bidder agrees and releases the State Government / District Committee, its employees, agents and advisers, irrevocably, unconditionally, fully and finally from any and all liability for claims, losses, damages, costs, expenses or liabilities in any way related to or arising from the exercise of any rights and / or performance of any obligations here under, pursuant hereto and / or in connection with the Bidding process and waives, to the fullest extent permitted by Applicable Law, any and all rights and / or claims it may have in this respect, whether actual or contingent, whether present or in future.

13.3. Manner of Conduction of e-Auction Process

The e-Auction process of minor mineral would be conducted in the National Informatics Centre portal and for guidance regarding manner of e-Auction of minor minerals the site of NIC may be visited.

**Sd/-
District Magistrate & Collector
Murshidabad**